

WeLoc[®]

Made in Sweden 



www.weloc.com

Reusable Closures

Welcome to WeLoc[®]

- a subsidiary of the Weland family group of companies in Sweden.

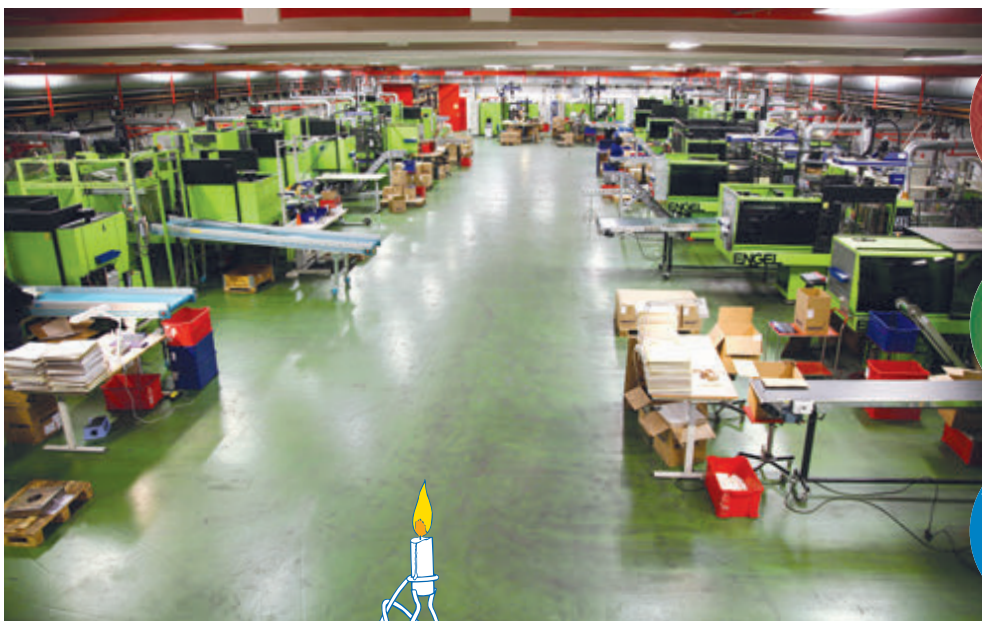
One of our strengths is our in-house ability to design and produce plastic closures to meet your requirements. Together, we can work to enhance your cost efficient and "just in time" deliveries.

"We have a WeLoc for any application. If not we will design a new one for you!"

WeLoc - Weland M. Division



Made in Sweden



WeLoc History



The unique WeLoc closure was born as result of a meeting between a patient, gravely ill from cancer, and his doctor who had new product ideas. In 1983 the cancer patient Åke Welandson met doctor Ingemar Näslund, senior physician and associate professor at Radiumhemmet in the Karolinska hospital.

The brothers Åke and Gösta Welandson, the owner of the family company Weland AB founded by their father Weland Anderson already in 1947, offered doctor Ingemar Näslund to become their partner in a newly founded company named Weland Medical AB.

The WeLoc closure was developed for liquid tight sealing of a special bag in a test device for early detection of urinary bladder cancer. Today there are more than 50 WeLoc models in different sizes, for sealing and reclosing of flexible packages all around. It is sold all over the world, under the names WeLoc, CLIP-it and Klippit.

Very soon after the establishment of Weland Medical AB, Weland bought the tool-producing company Makeni AB, to fulfil the product ideas within Weland Medical AB. Both sister companies have moved a couple of times within the facilities of Weland to finally end up in their own spacious facility in Smålandsstenar. Makeni is today a complete and highly skilled company within injection moulding. As well as producing WeLoc closures and their own products like rollators, they are big suppliers to the automotive industry to name one.

Åke Welandson unfortunately died from his cancer but his brother Gösta Welandson is still an active owner and leader of the steady growing Weland Group with today more than 900 employed and a turnover exceeding 200 million €.

We are so happy that the sole family ownership will continue and Göstas son Jonas Welandson is now the vice president of the group.

As the brand name WeLoc has been well known worldwide, Weland Medical AB is today working under the trade name WeLoc – Weland M. AB. To learn more about WeLoc, Makeni and the Weland Group please browse through this catalogue or visit www.weloc.com, www.makeni.se and www.weland.se

We will finally give our special thanks to the customers who have been so kind to let us use original photos from their own environments where our WeLoc closures are being used.

With kind regards

Arne Henningsson
Division Manager
WeLoc – Weland M. AB

Research & Develop



ment

WeLoc PA was originally developed for medical use and is manufactured under strict hygienic conditions.

Its unique sealing ability makes it convenient for many applications where a liquid tight seal is required.

All WeLoc can be sterilized.



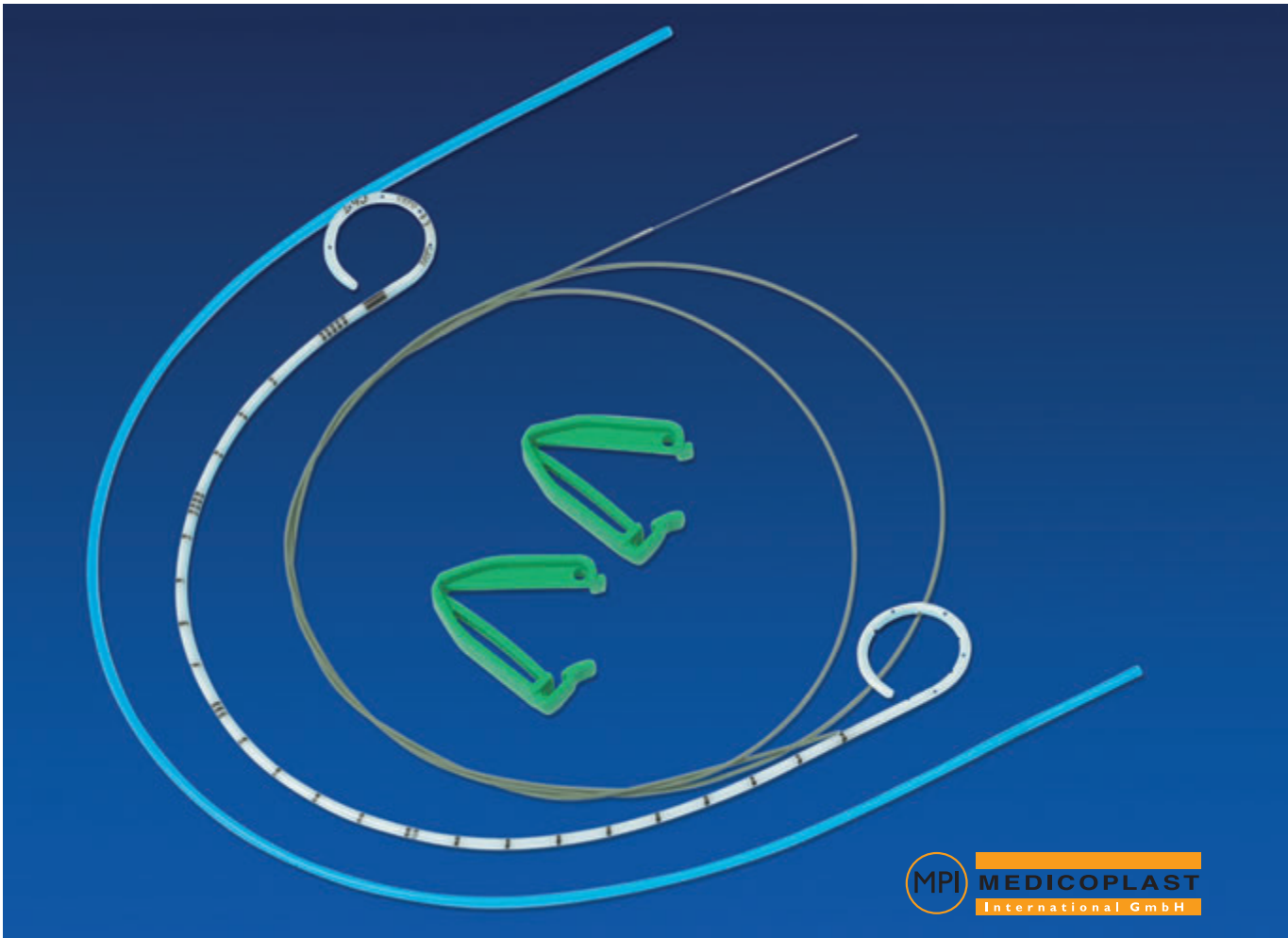


Healthcar



The strong and proven Weloc seal prevents leakage and works as a reliable aid in home and hospital environments.

Whether young or old - Weloc helps you to live an active and happy life wherever you are.



Pharmaceut



WeLoc works as the perfect barrier to separate powders and fluids in demanding environments. It can be sterilized for continuous re-use.



ical Industry





Pharmace Industry

Reduce the risk of cross contamination and preserve hygienic standards by securing bag contents with Weloc.

The locking ability of Weloc Gripper will help to minimize the risk of leakage and accidents within your plant and promote a clean environment.





utical

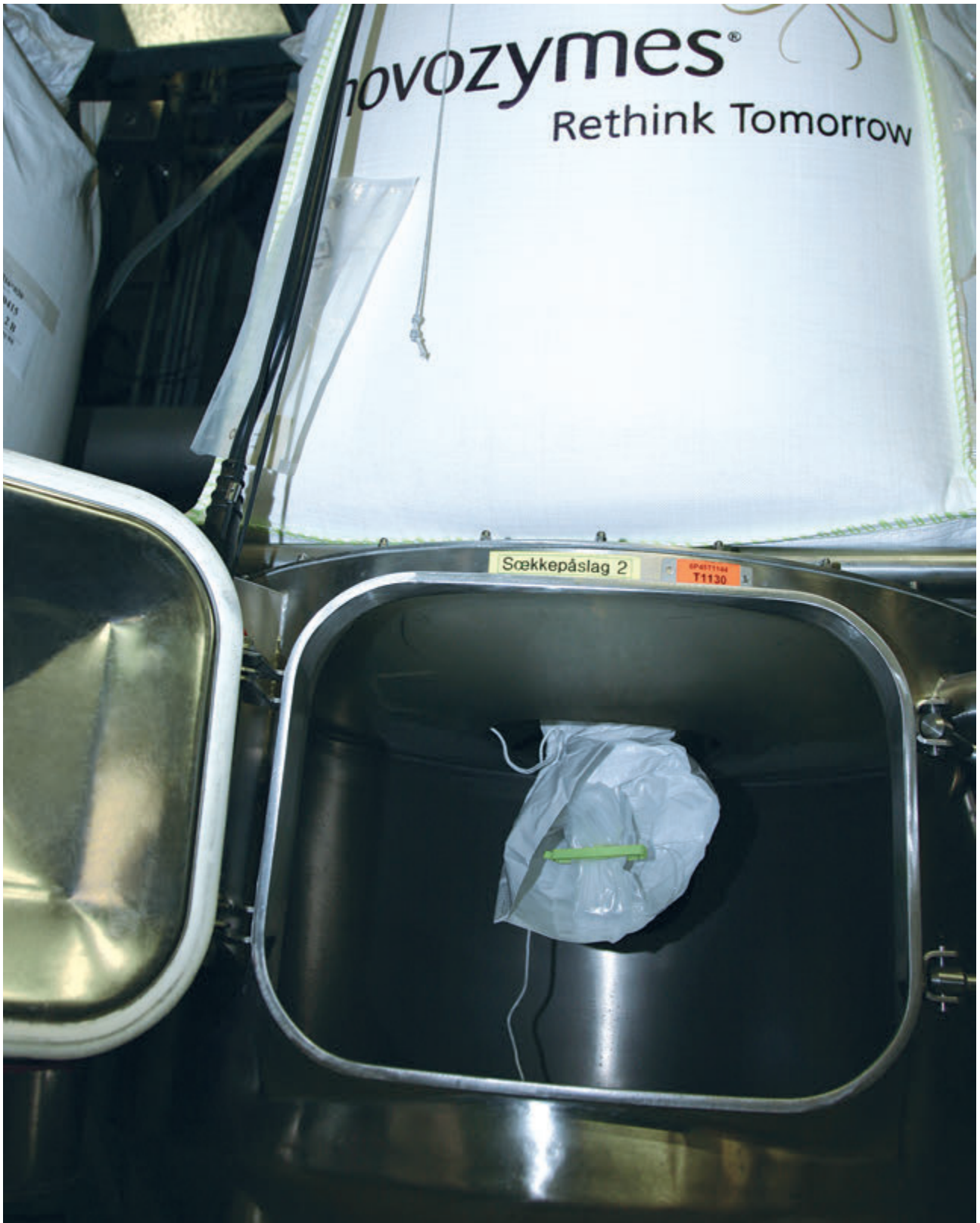




PA 110S



Industry

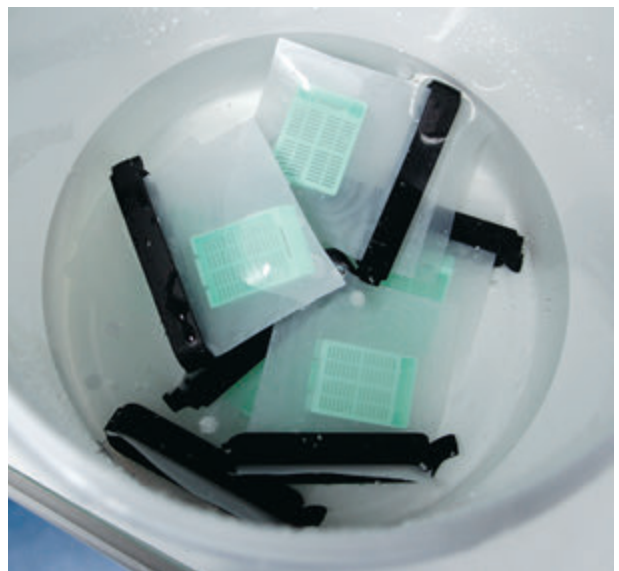


Industry



There is a Weloc for every application - from the smallest bag to the largest sacks and FIBC.

Using Weloc will keep raw materials, ingredients and valuable products safe, secure and locked during storage in your factory and warehouse.





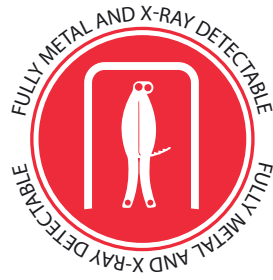




stry



Food Processing



The Process Control will be fulfilled by using Fully Detectable Closures.
Your ingredients will be secured during transport and stock-keeping.





WeLoc Gripper PA 100 FD



Detectable

Fully Metal and X-ray Detectable.

New!

WeLoc POM 320 FD
made from a special Acetal – POM.
When storage of ingredients in the
Ultra Low Temperature Freezer.



WeLoc POM 320 FD



DURABLE AT -50°C / -58°F



Food Proc



formidabel
KÄNSLAN • DOFTEN • SMAKEN



essing

Cross contamination and spilt contents are things of the past.

Your raw materials can easily be secured and locked during transport within the plant or while being kept for future use.



Food P



reparation



Some of the best known international food and beverage corporations already rely on Weloc.

Larger sizes of Weloc clips help to meet the sealing and closure requirements necessary to deliver optimum hygiene standards in professional kitchens and restaurants.



P



Food reparation



Food Preparatio

Partly used bulk sacks of food ingredients and raw materials can be quickly and easily secured with Weloc Gripper PA 100.

Help you to reduce wastage and prevent expensive cross-contamination.



n





Pet Food

Pet food is easily kept secured, fresh and odor free with WeLoc.

A WeLoc Scoop combines the ability to both measure and seal, making it the most convenient way to give your pet the right portion.





Promote y



Embossed logo



our Brand

Promote your brand with personalized WeLoc to provide a "silent reminder" to your company's customers for years to come!

We offer high quality pad printing in up to four colors and also embossing as a cost-effective choice for larger quantities.



Pad printing





www.brixdesign.com



Retail

Are available in different styles of packaging from our worldwide distributors.



scandinavia
direct

www.weloc.co.uk



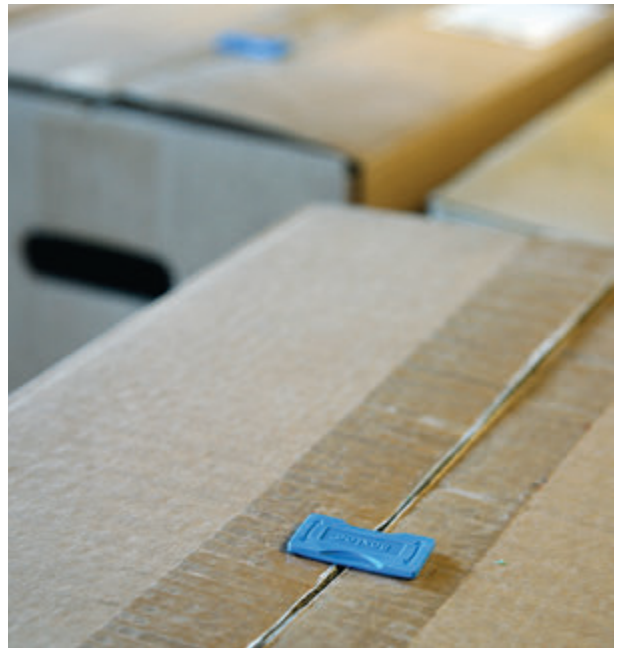
Packaging

Solutions

You are welcome to create your own style of packaging.

Use your own design to create an image that is best suited to your individual requirements.

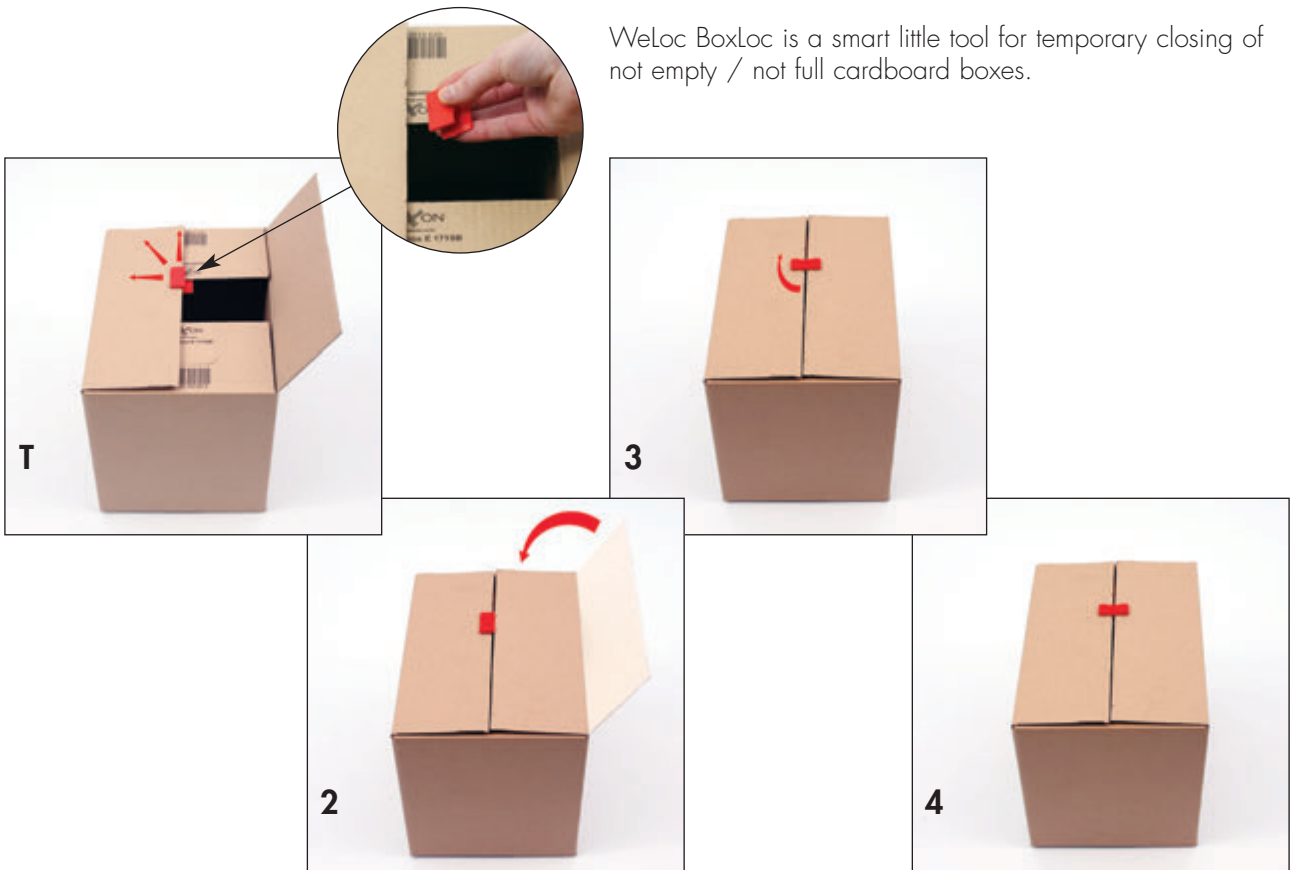




BoxLoc

Keep order in your workplace!

WeLoc BoxLoc is a smart little tool for temporary closing of not empty / not full cardboard boxes.



WeLoc PP, made from Polypropylene, is the ideal closure for domestic use and for light industrial applications, combining long life with value for money. All sizes can be personalized with imprinting and three of the largest also with embossing.



| Model | Sealing length | | Total length | | Printing area | | Pcs/Carton (pcs) | Weight/Carton | |
|--------|----------------|--------|--------------|--------|---------------|--------------|---------------------|---------------|-------|
| | (mm) | (inch) | (mm) | (inch) | (mm) | (inch) | | (kg) | (lbs) |
| PP 30 | 30 | 1 1/8 | 35 | 1 1/2 | 15 x 5 | 5/8 x 3/16 | 5 000 | 6,4 | 14,1 |
| PP 40 | 40 | 1 1/2 | 50 | 1 7/8 | 22 x 7 | 7/8 x 1/4 | 2 500 | 5,6 | 12,4 |
| PP 60 | 60 | 2 1/4 | 70 | 2 3/4 | 35 x 5 | 1 3/8 x 3/16 | 2 000 | 6,2 | 13,7 |
| PP 75 | 75 | 2 7/8 | 90 | 3 1/2 | 50 x 8 | 2 x 5/16 | 1 000 | 8,0 | 17,6 |
| PP 120 | 120 | 4 5/8 | 140 | 5 5/8 | 80 x 10 | 3 1/8 x 3/8 | 500 | 7,2 | 15,9 |

Standard colors: White, red, yellow, blue, green, black & transparent.

Special color: On request for higher volumes

Imprint: All models on one side.

Embossing: PP 60, PP 75, PP 120

Type registered trademark.

WeLoc international utility and design patent.



Images shown to scale



Images shown to scale

WeLoc® PA

Airtight quality sealing

WeLoc PA, made from Nylon, Polyamide PA 6.6, is the ultimate option when the optimum seal is required. It's unique seal and long life makes the PA a perfect choice for households, laboratories and production.

Print your logo or message on the WeLoc PA and you will have a continuing "silent reminder" of your company for years to come.

| Model | Sealing length | | Total length | | Printing area | | Pcs/Carton (pcs) | Weight/Carton | |
|--------|----------------|--------|--------------|--------|---------------|----------------|---------------------|---------------|-------|
| | (mm) | (inch) | (mm) | (inch) | (mm) | (inch) | | (kg) | (lbs) |
| PA 50 | 50 | 1 7/8 | 65 | 2 1/2 | 35 x 8 | 1 3/8 x 5/16 | 2 000 | 12,6 | 27,8 |
| PA 60 | 60 | 2 1/4 | 75 | 2 7/8 | 40 x 6 | 1 9/16 x 15/64 | 2 000 | 12,5 | 27,6 |
| PA 70 | 70 | 2 3/4 | 90 | 3 1/2 | 53 x 10 | 2 1/8 x 3/8 | 1 000 | 11,5 | 25,4 |
| PA 110 | 110 | 4 1/4 | 130 | 5 | 80 x 10 | 3 1/8 x 3/8 | 500 | 9,8 | 21,4 |
| PA 150 | 150 | 6 | 178 | 7 | 105 x 10 | 4 1/8 x 3/8 | 400 | 12,5 | 27,6 |
| PA 220 | 220 | 8 5/8 | 260 | 10 1/4 | 105 x 10 | 4 1/8 x 3/8 | 200 | 10,8 | 23,8 |
| PA 320 | 320 | 12 5/8 | 362 | 14 1/4 | 105 x 10 | 4 1/8 x 3/8 | 180 | 13,5 | 29,8 |

Standard colors: White, red, yellow, blue, green & black



Special color: On request for higher volumes

S-version (for thicker materials): PA70S, PA110S, PA150S, PA220S & PA320S

Imprint: All models on two sides.

Embossing: PA 60

Type registered trademark.

WeLoc international utility and design patent.



Combine

as you like



| Model | Sealing length | | Total length | | Printing area | | Pcs/Carton (pcs) | Weight/Carton | |
|--------------|----------------|--------|--------------|---------|---------------|-------------|---------------------|---------------|-------|
| | (mm) | (inch) | (mm) | (inch) | (mm) | (inch) | | (kg) | (lbs) |
| PA 320-250 | 320 | 12 5/8 | 465 | 18 1/4 | 105 x 10 | 4 1/8 x 3/8 | 54 | 7,1 | 15,7 |
| PA 220-250 | 220 | 8 5/8 | 368 | 14 1/2 | 105 x 10 | 4 1/8 x 3/8 | 40 | 3,9 | 8,6 |
| PA 150-250 | 150 | 5 7/8 | 286 | 11 5/16 | 105 x 10 | 4 1/8 x 3/8 | 65 | 4,9 | 10,8 |
| PA 320-110 | 320 | 12 5/8 | 435 | 17 1/8 | 105 x 10 | 4 1/8 x 3/8 | 70 | 7,4 | 16,3 |
| PA 220-110 | 220 | 8 5/8 | 340 | 13 3/8 | 105 x 10 | 4 1/8 x 3/8 | 60 | 4,5 | 9,9 |
| PA 150-110 | 150 | 5 7/8 | 260 | 10 1/4 | 105 x 10 | 4 1/8 x 3/8 | 95 | 5,0 | 11,0 |
| PA 220-55 | 220 | 8 5/8 | 335 | 13 1/4 | 105 x 10 | 4 1/8 x 3/8 | 100 | 6,5 | 14,3 |
| PA 150-55 | 150 | 5 7/8 | 255 | 10 | 105 x 10 | 4 1/8 x 3/8 | 140 | 6,1 | 13,5 |
| PA 110-55 | 110 | 4 1/4 | 220 | 8 5/8 | 80 x 10 | 3 1/8 x 3/8 | 240 | 7,2 | 15,9 |
| PA 150-15 | 150 | 5 7/8 | 220 | 8 5/8 | 105 x 10 | 4 1/8 x 3/8 | 250 | 9,3 | 20,5 |
| PA 110-15 | 110 | 4 1/4 | 180 | 7 1/8 | 80 x 10 | 3 1/8 x 3/8 | 390 | 9,8 | 21,6 |
| PP 120-30 | 120 | 4 5/8 | 140 | 5 5/8 | 80 x 10 | 3 1/8 x 3/8 | 300 | 5,9 | 13,0 |
| PP 120-18 | 120 | 4 5/8 | 140 | 5 5/8 | 80 x 10 | 3 1/8 x 3/8 | 320 | 5,8 | 12,8 |
| Spoon PA 70 | 70 | 2 3/4 | 130 | 5 | 53 x 10 | 2 1/8 x 3/8 | 600 | 8,6 | 18,9 |
| Spoon PA 110 | 110 | 4 1/4 | 170 | 6 5/8 | 80 x 10 | 3 1/8 x 3/8 | 400 | 8,8 | 19,4 |
| Spoon PP 75 | 75 | 2 7/8 | 130 | 5 | 50 x 8 | 2 x 5/16 | 600 | 6,4 | 14,1 |

Standard colors: White, red, yellow, blue, green & black



Special color: On request for higher volumes

S-version (for thicker materials): PA70S, PA110S, PA150S, PA220S & PA320S.

Imprint: To your preference.

Type registered trademark.

WeLoc international utility and design patent.



Can be combined with:

PA 320/320S
PA 220/220S
PA 150/150S

Model:

PA 320(S)-250
PA 220(S)-250
PA 150(S)-250



Can be combined with:

PA 320/320S
PA 220/220S
PA 150/150S

Model:

PA 320(S)-110
PA 220(S)-110
PA 150(S)-110



Can be combined with:

PA 220/220S
PA 150/150S
PA 110/110S

Model:

PA 220(S)-55
PA 150(S)-55
PA 110(S)-55



Can be combined with:

PA 150/150S
PA 110/110S

Model:

PA 150(S)-15
PA 110(S)-15



Can be combined with:

PP 120

Model:

PP 120-30



Can be combined with:

PP 120

Model:

PP 120-18



Can be combined with:

PA 70
PA 110
PP 75

Model:

Spoon PA 70
Spoon PA 110
Spoon PP 75

WeLoc® Cable Holder
Organized Adaption




| Model | Sealing length | | Total length | | Printing area | | Pcs/Carton (pcs) | Weight/Carton | |
|-------|----------------|--------|--------------|--------|---------------|--------------|---------------------|---------------|-------|
| | (mm) | (inch) | (mm) | (inch) | (mm) | (inch) | | (kg) | (lbs) |
| PA 50 | 50 | 1 7/8 | 65 | 2 1/2 | 35 x 8 | 1 3/8 x 5/16 | 2 000 | 12,0 | 26,5 |

Standard colors: White, red, yellow, blue, green & black 
Type registered trademark.

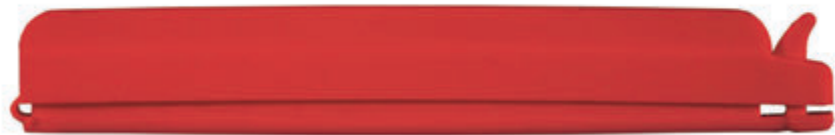
WeLoc® Hanger
Fixation Tool



| Model | Sealing length | | Total length | | Printing area | | Pcs/Carton (pcs) | Weight/Carton | |
|--------|----------------|--------|--------------|--------|---------------|-------------|---------------------|---------------|-------|
| | (mm) | (inch) | (mm) | (inch) | (mm) | (inch) | | (kg) | (lbs) |
| PA 70 | 70 | 2 3/4 | 110 | 4 1/4 | 53 x 10 | 2 1/8 x 3/8 | 800 | 12,5 | 27,6 |
| PA 110 | 110 | 4 1/4 | 150 | 5 7/8 | 80 x 10 | 3 1/8 x 3/8 | 400 | 9,6 | 21,2 |
| PA 150 | 150 | 5 7/8 | 190 | 7 1/2 | 105 x 10 | 4 1/8 x 3/8 | 350 | 14,1 | 31,1 |

Standard colors: White, red, yellow, blue, green & black 
Special color: On request for higher volumes
S-version (for thicker materials): PA70S, PA110S, PA150S
Imprint: All models on two sides.
Type registered trademark.

WeLoc® Care
Comfortable Sealing



| Model | Sealing length | | Total length | | Printing area | | Pcs/Carton (pcs) | Weight/Carton | |
|-------|----------------|--------|--------------|--------|---------------|--------|---------------------|---------------|-------|
| | (mm) | (inch) | (mm) | (inch) | (mm) | (inch) | | (kg) | (lbs) |
| PA 90 | 90 | 3 1/2 | 108 | 4 1/4 | - | - | 1000 | 8,2 | 18,1 |

Standard colors: White, red, yellow, blue, green & black 
Type registered trademark.



WeLoc® Gripper
Power closing

WeLoc Gripper PA 100 is the most powerful WeLoc closure. It is manufactured from Nylon, Polyamide PA 6.6 reinforced with fiberglass which further enhances its strength and durability.

The Gripper is designed to cope with the toughest environments and is therefore excellent for many industrial applications, where a stronger seal is often required.

Can be personalized with printing in up to two colors.

Standard colors: White, red, yellow, blue, green & black.



Special color: On request for higher volume.

Imprint: To your preference.

Type registered trademark.

WeLoc international utility and design patent.

| Model | Sealing length | | Total length | | Weight/Pcs | | Pcs/Carton (pcs) | Weight/Carton | |
|--------|----------------|--------|--------------|--------|------------|------|---------------------|---------------|-------|
| | (mm) | (inch) | (mm) | (inch) | (g) | (oz) | | (kg) | (lbs) |
| PA 100 | 100 | 4 | 245 | 9 5/8 | 100 | 3,5 | 90 | 9,5 | 20,9 |

Image shown to scale

WeLoc® Gripper FD

Fully detectable

Detec

WeLoc Gripper PA 100 FD is a powerful sack closure Fully Metal and X-ray Detectable for the Food and Pharmaceutical Industry.



WeLoc Gripper PA 100 FD

| Model | Sealing length | | Total length | | Weight/Pcs | | Pcs/Carton (pcs) | Weight/Carton | |
|-----------|----------------|--------|--------------|--------|------------|------|---------------------|---------------|-------|
| | (mm) | (inch) | (mm) | (inch) | (g) | (oz) | | (kg) | (lbs) |
| PA 100 FD | 100 | 4 | 245 | 9 5/8 | 145 | 5,08 | 90 | 14,0 | 30,9 |

Standard color: Dark Blue.

Imprint: To your preference.

Type registered trademark.

WeLoc international utility and design patent.



POM 320 FD

table

WeLoc® POM FD

Fully detectable

WeLoc POM 320 FD is made from a special Acetal – POM.
Fully Metal and X-ray Detectable.

For the Food and Pharmaceutical Industry.

When storage of ingredients in the Ultra Low Temperature Freezer.



| Model | Sealing length | | Total length | | Printing area | | Pcs/Carton (pcs) | Weight/Carton | |
|------------|----------------|--------|--------------|--------|---------------|-------------|---------------------|---------------|-------|
| | (mm) | (inch) | (mm) | (inch) | (mm) | (inch) | | (kg) | (lbs) |
| POM 320 FD | 320 | 12 5/8 | 362 | 14 1/4 | 105 x 10 | 4 1/8 x 3/8 | 180 | 17,4 | 38,4 |

Standard color: Dark Blue.

Imprint: To your preference

Type registered trademark.

WeLoc international utility and design patent.



DURABLE AT -50°C / -58°F

Delivery & Stock information

Wherever you are - we offer prompt, safe deliveries by truck, air, sea or by parcel.

Delivery time (based on quantity):

Unprinted: Normally from stock within one working week

Printed: Ready to send 3-4 working weeks after received order and artwork.

For collect freight please state forwarder/shipping agent and/or account no.

Custom tariff no: 39235090

Up to 3 standard Weloc cartons will be sent in individual protective transport cartons.
Other deliveries will be supplied on pallets.



Standard (40 cartons/pallet)



Packaging specifications

Standard carton (L x W x H):

$0,385 \times 0,29 \times 0,325 = 0,037 \text{ m}^3$

Transport carton (L x W x H):

$0,400 \times 0,320 \times 0,360 \text{ m} = 0,046 \text{ m}^3$

Standard EUR-pallet (L x W): $1,2 \times 0,8 \text{ m}$

8 standard cartons / layer

| Layers | Height | Volyme |
|--------------------------|--------|---------------------|
| 1 layer (1-8 cartons) | 0,50 m | 0,48 m ³ |
| 2 layers (9-16 cartons) | 0,80 m | 0,77 m ³ |
| 3 layers (17-24 cartons) | 1,15 m | 1,10 m ³ |
| 4 layers (25-32 cartons) | 1,45 m | 1,39 m ³ |
| 5 layers (33-40 cartons) | 1,80 m | 1,73 m ³ |
| 6 layers (41-48 cartons) | 2,10 m | 2,02 m ³ |

Standard (40 cartons/pallet)



WeLoc - Weland M. AB

Box 504 | SE-333 28 Smålandsstenar | Sweden

Telephone: +46 371 348 10 | Telefax: +46 371 348 14

E-mail: info@weloc.com | Internet: www.weloc.com