

# AFVALDOORVOEREN

## Afvaldoorvoeren RVS - 'Rond'

► RVS AISI 304

► mat of hoogglans afwerking

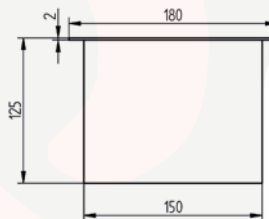
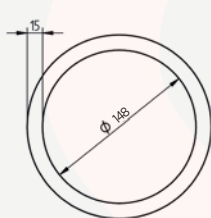
► voor eenvoudige inbouw (drop-in)

► vlakke of gebogen flens

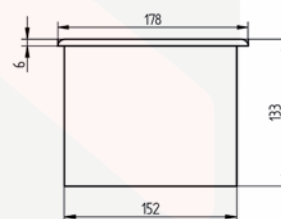
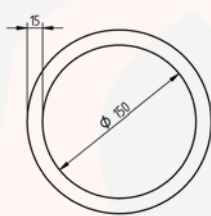
|                                              |                            | uitw. afm. | hoogte | inbouwmaat |
|----------------------------------------------|----------------------------|------------|--------|------------|
| <b>RVS - Rond - dikte 1,5 mm (mat)</b>       |                            |            |        |            |
| JVO-1020                                     | Vlak boord (breedte 15 mm) | Ø180       | 125    | Ø150       |
| JVO-1030                                     | Bol boord (breedte 15 mm)  | Ø178       | 133    | Ø152       |
| <b>RVS - Rond - dikte 0,8 mm (hoogglans)</b> |                            |            |        |            |
| JVO-1100                                     | Bol boord (breedte 15 mm)  | Ø180       | 130    | Ø152       |
| JVO-1200                                     | Bol boord (breedte 11 mm)  | Ø170       | 133    | Ø148       |
| <b>RVS - Rond - kabelring (hoogglans)</b>    |                            |            |        |            |
| JVO-1300                                     | Bol boord (breedte 11 mm)  | Ø82        | 48     | Ø71        |



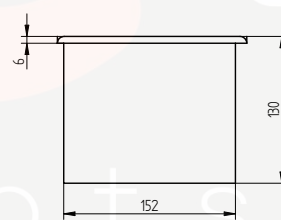
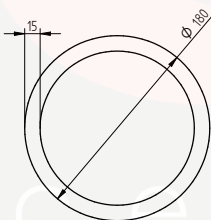
JVO-1020



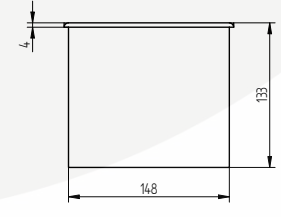
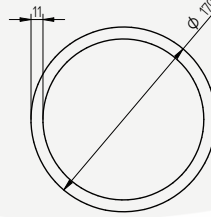
JVO-1030



JVO-1100



JVO-1200



JVO-1300

